

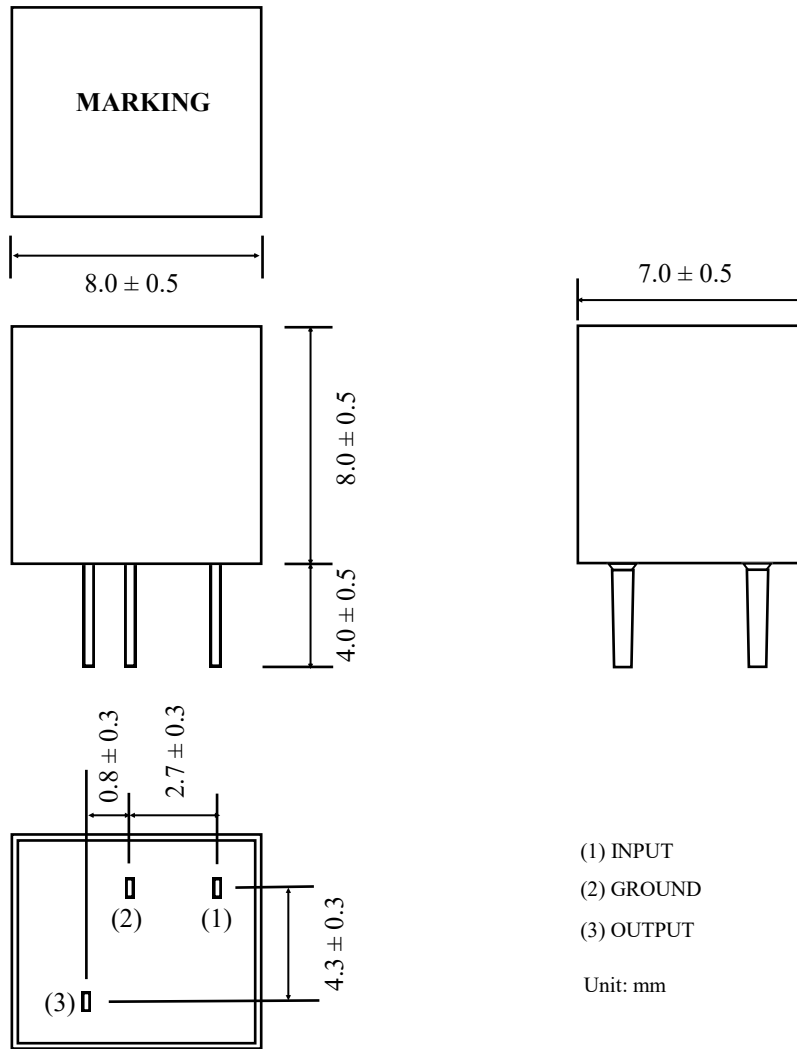
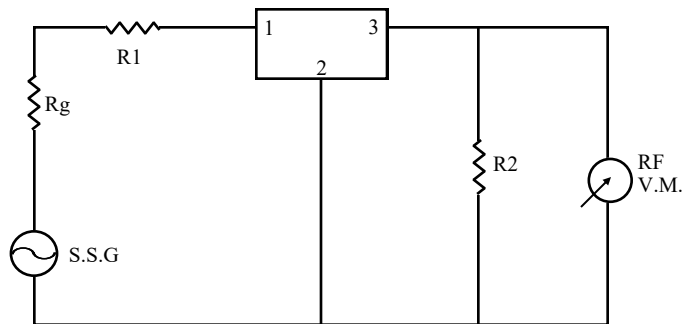
**CERAMIC FILTER (3pins) - LT455-U / LT450-U Series**
**► 455 kHz Series**

PART NUMBER	CENTER FREQUENCY (kHz)	INSERTION LOSS (dB)	PASS BAND RIPPLE (dB) MAX.	AT 6dB BANDWIDTH (kHz) MIN.	40dB BANDWIDTH (kHz) MAX.	STOP BAND $\pm 100$ kHz (dB) MIN.	INPUT/OUTPUT IMPEDANCE( $\Omega$ )
LT455BU	455 $\pm$ 2.0	4	2	$\pm$ 15	$\pm$ 30	30	1500
LT455CU	455 $\pm$ 2.0	4	2	$\pm$ 12.5	$\pm$ 24	30	1500
LT455DU	455 $\pm$ 1.5	4	2	$\pm$ 10	$\pm$ 20	30	1500
LT455EU	455 $\pm$ 1.5	6	2	$\pm$ 7.5	$\pm$ 15	30	1500
LT455FU	455 $\pm$ 1.5	6	2	$\pm$ 6	$\pm$ 12.5	30	2000
LT455GU	455 $\pm$ 1.5	6	2	$\pm$ 4.5	$\pm$ 10	30	2000
LT455HU	455 $\pm$ 1.0	6	2	$\pm$ 3	$\pm$ 9	30	2000
LT455IU	455 $\pm$ 1.0	6	2	$\pm$ 2	$\pm$ 7.5	30	2000
LT455HTU	455 $\pm$ 1.0	6	2	$\pm$ 3	$\pm$ 9	35	2000

**► 450 kHz Series**

PART NUMBER	CENTER FREQUENCY (kHz)	INSERTION LOSS (dB)	PASS BAND RIPPLE (dB) MAX.	AT 6dB BANDWIDTH (kHz) MIN.	40dB BANDWIDTH (kHz) MAX.	STOP BAND $\pm 100$ kHz (dB) MIN.	INPUT/OUTPUT IMPEDANCE( $\Omega$ )
LT450BU	450 $\pm$ 2.0	4	2	$\pm$ 15	$\pm$ 30	30	1500
LT450CU	450 $\pm$ 2.0	4	2	$\pm$ 12.5	$\pm$ 24	30	1500
LT450DU	450 $\pm$ 1.5	4	2	$\pm$ 10	$\pm$ 20	30	1500
LT450EU	450 $\pm$ 1.5	6	2	$\pm$ 7.5	$\pm$ 15	30	1500
LT450FU	450 $\pm$ 1.5	6	2	$\pm$ 6	$\pm$ 12.5	30	2000
LT450GU	450 $\pm$ 1.5	6	2	$\pm$ 4.5	$\pm$ 10	30	2000
LT450HU	450 $\pm$ 1.0	6	2	$\pm$ 3	$\pm$ 9	30	2000
LT450IU	450 $\pm$ 1.0	6	2	$\pm$ 2	$\pm$ 7.5	30	2000
LT450HTU	450 $\pm$ 1.0	6	2	$\pm$ 3	$\pm$ 9	35	2000

*Transko Electronics, Inc reserves the right to make changes to the product (s), service (s), and specification (s) described herein without notice. See "Terms of Sale" for details on our website.*

**■ PACKAGE DIMENSIONS**

**■ TEST CIRCUIT**


$$R_g + R_1 = R_2 = \text{INPUT/OUTPUT IMPEDANCE}$$

*Transko Electronics, Inc reserves the right to make changes to the product (s), service (s), and specification (s) described herein without notice. See "Terms of Sale" for details on our website.*